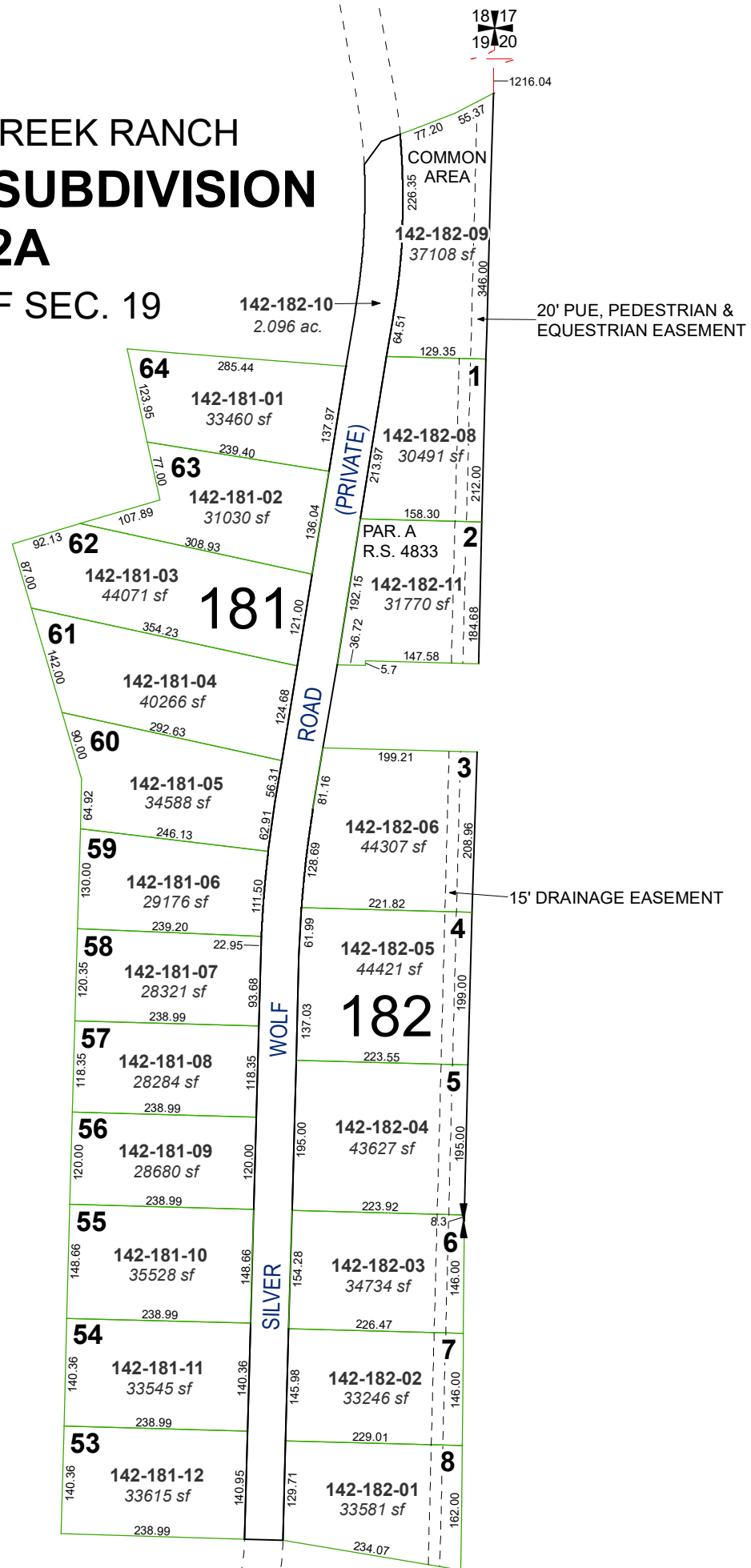


(#3876)
THE FAIRWAYS OF FIELDCREEK RANCH
FIELDCREEK RANCH SUBDIVISION
UNIT NO. 12A

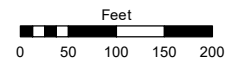
A POR. OF THE E 1/2 OF SEC. 19
 T18N - R20E



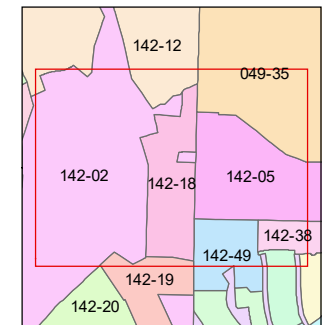
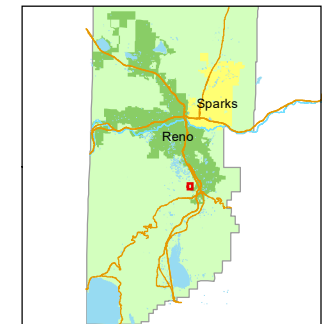
Assessor's Map Number

142-18

STATE OF NEVADA
WASHOE COUNTY
 ASSESSOR'S OFFICE
 1001 East Ninth Street, Building D
 Reno, Nevada 89512
 (775) 328-2231



1 inch = 200 feet



created by: NLH 09/19/2012

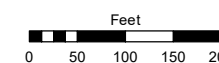
updated: KGC 08/22/24

area previously shown on map(s):
142-02

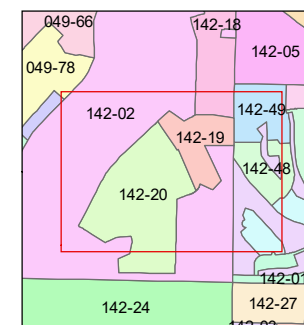
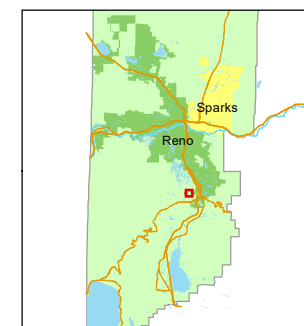
NOTE: This map was prepared for the use of the Washoe County Assessor for assessment and illustrative purposes only. It does not represent a survey of the premises. No liability is assumed as to the sufficiency or accuracy of the data delineated hereon.

STATE OF NEVADA
WASHOE COUNTY
ASSESSOR'S OFFICE

1001 East Ninth Street, Building D
Reno, Nevada 89512
(775) 328-2231



1 inch = 200 feet



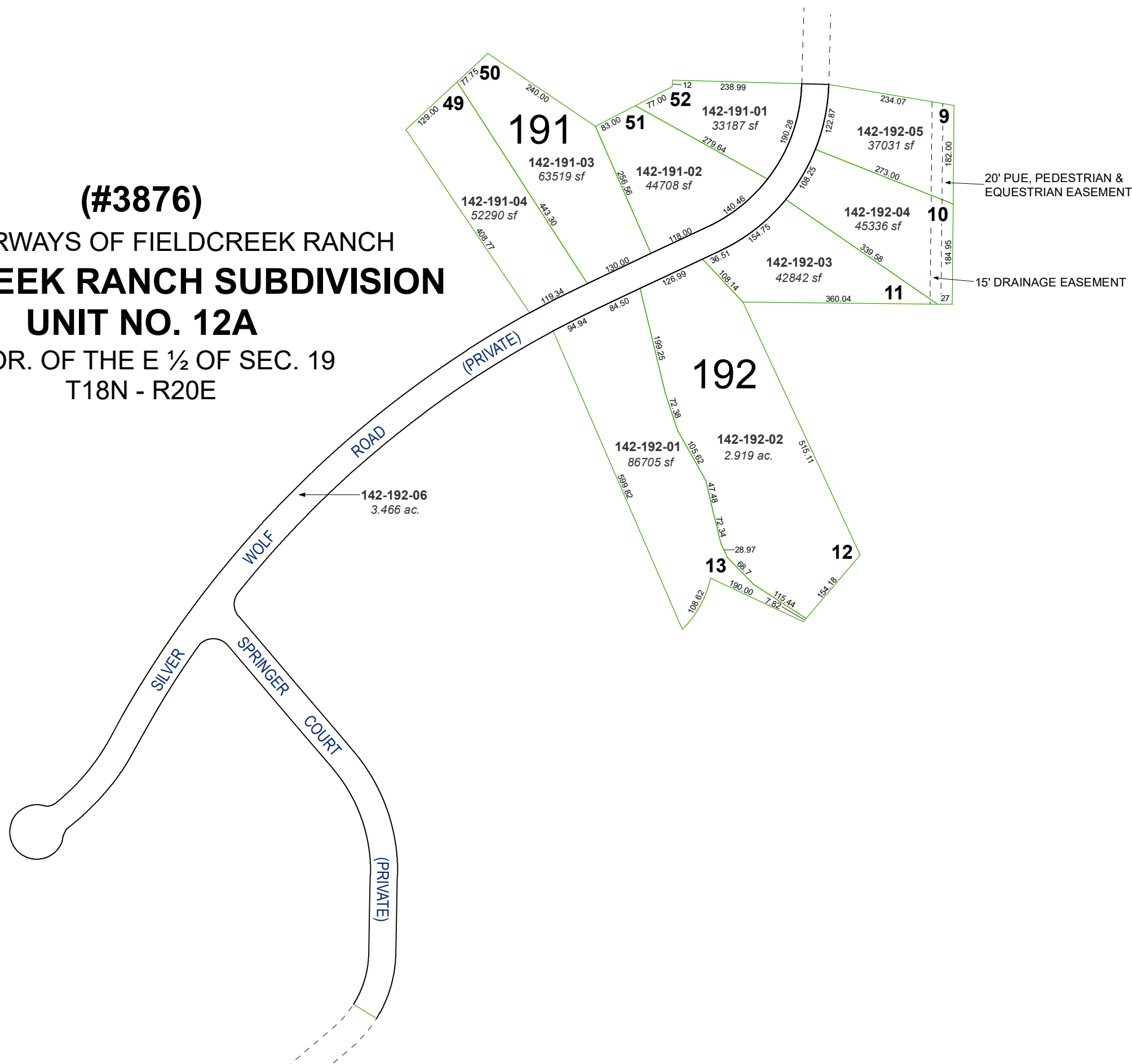
created by: NLH 09/19/2012

updated: KGC 08/22/24

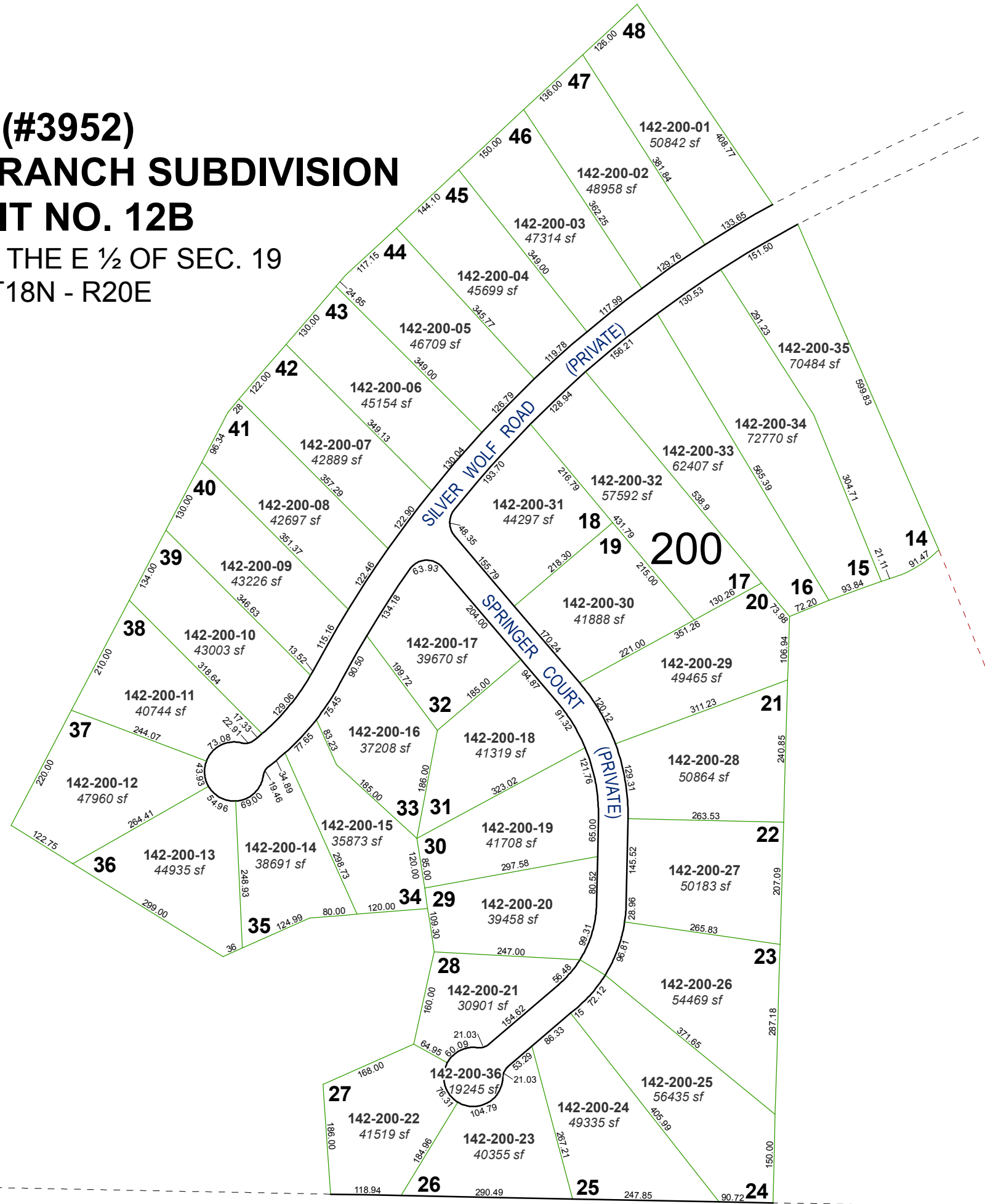
area previously shown on map(s):
142-02

NOTE: This map was prepared for the use of the Washoe County Assessor for assessment and illustrative purposes only. It does not represent a survey of the premises. No liability is assumed as to the sufficiency or accuracy of the data delineated hereon.

(#3876)
THE FAIRWAYS OF FIELDCREEK RANCH
FIELDCREEK RANCH SUBDIVISION
UNIT NO. 12A
A POR. OF THE E 1/2 OF SEC. 19
T18N - R20E



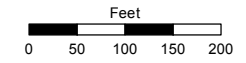
(#3952)
FLDCREEK RANCH SUBDIVISION
UNIT NO. 12B
 A POR. OF THE E 1/2 OF SEC. 19
 T18N - R20E



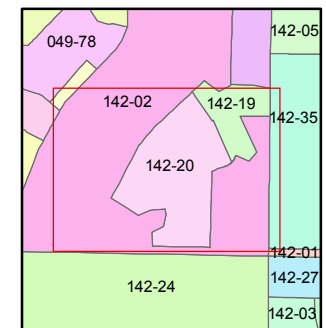
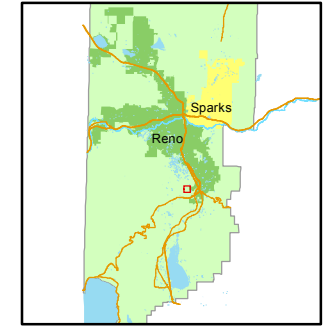
Assessor's Map Number
142-20

STATE OF NEVADA
WASHOE COUNTY
ASSESSOR'S OFFICE
 Joshua G. Wilson, Assessor

1001 East Ninth Street
 Building D
 Reno, Nevada 89512
 (775) 328-2231



1 inch = 200 feet



created by: NLH 09/19/2012
 last updated: _____
 area previously shown on map(s)
142-02

NOTE: This map was prepared for the use of the Washoe County Assessor for assessment and illustrative purposes only. It does not represent a survey of the premises. No liability is assumed as to the sufficiency or accuracy of the data delineated herein.