



At Fieldcreek Ranch Homeowners Association

www.fairwaysatfieldcreek.com

Fairways Notice

Thursday, May 7, 2020 Slurry Seal

NO ENTRY/EXIT between 7AM-6PM

The traditional slurry seal of our Fairway roads will take place this Thursday.

Please remember that no vehicles or homeowners walking/riding bikes will be allowed on Silver Wolf Rd and Springer Ct., between the hours of 7am-6pm on Thursday May 7, 2020. Until it sets Thursday afternoon, the slurry seal can cause damage to vehicles and can stick to the bottom of shoes/tires and cause damage to driveways, pavers, and clothing.

If anyone drives on fresh slurry seal before 6pm, charges to that homeowner may be assessed if there is additional work required by SNC.

SNC – SLURRY SEAL



This may be one day of inconvenience to some of our homeowners; however, all homeowners will have a nice, smoother road for the next few years to enjoy.

We have listed below some of the performance items when the Type 2 Slurry Seal is applied to your roads, according to SNC.

1. Crack Reflection – The pavement cracks have been sealed with rubber and the slurry seal but over time will reappear. This is called crack reflection when you can see them thru the slurry seal. They will separate over time depending on the movements in the pavements. Plan to reseal the cracks every season or two with rubber as a routine maintenance measure to prevent moisture from entering the base.
2. Power Steering Marks – As automobiles and other types of vehicles turn sharply on the new slurry seal this will create power steering marks or tire smudges. This is expected. It will even out over time and blend in with more traffic use.
3. Type 2 Slurry Seal Shedding – In the next few months and as more traffic turns sharply on the slurry seal this will create some 'shedding' or 'pebbles'. This is normal and expected. You may want to sweep the roadways after a month or two as needed.

Thank You for your anticipated cooperation,

Your Board of Directors,

Fairways at Fieldcreek

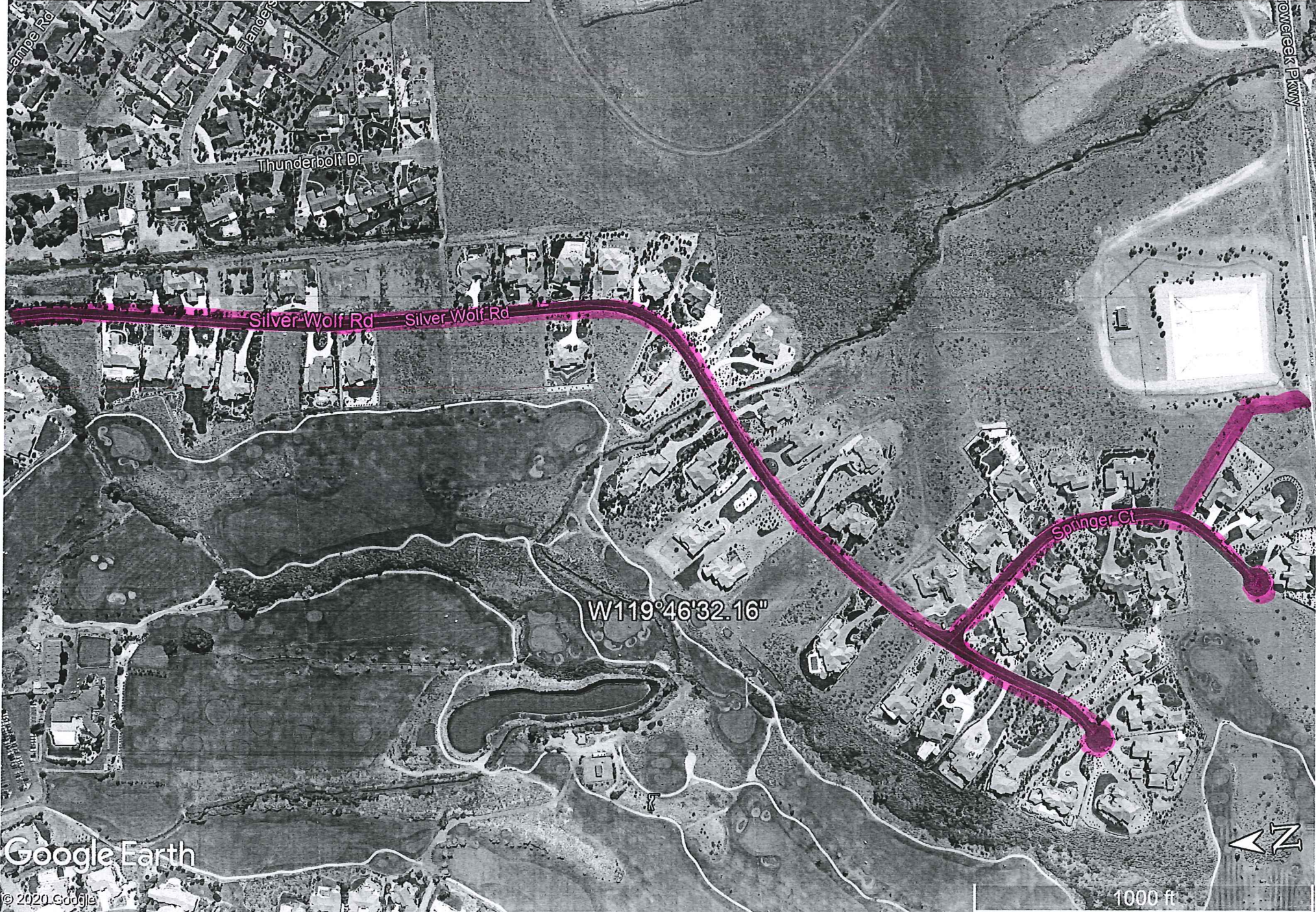
FAIRWAYS AT FIELDCREEK HOA

Write a description for your map.

W119°46'6.24"

Legend

 SLURRY SEAL



Google Earth

© 2020 Google

1000 ft

URGENT

URGENT

NOTICE

STREET SEALING

No Parking 7am to 6pm

MON TUE WED THUR FRI SAT SUN

The 7th of this month, an Asphalt Surface Treatment will be placed on your street or parking lot.

We're sorry for any inconvenience this may cause you. Please park and drive on adjacent streets or parking lots which are not posted **NO PARKING**. Any vehicles parked within the posted areas during the, **NO PARKING** times, may be towed at owners expense. Failure to obey traffic control and devices at construction site will be enforced on this project.

Your street or parking lot will be **CLOSED**, unless flaggers are present to control traffic. Please avoid driving, bicycle riding, or walking on sealed pavements until the new surface dries. Under normal weather conditions your street or lot will be re-opened within 4 to 6 hours after sealing is complete. Only **EMERGENCY VEHICLES** will be allowed through at any time.

Please turn off your sprinklers and do not permit water to run in the concrete gutter during this period.

Weather considerations, or equipment breakdowns may cause schedule changes. If your street or parking lot is not completed due to any reason, you will be re-notified as to the new date.

Thank You

for your cooperation and patience.



Asphalt Surface Treatment

An asphalt seal is a very economical surface treatment that prolongs the life of the pavement by stopping erosion from water and oxidation from the sun. Timely preventative maintenance like this helps avoid extremely costly repairs in the future.

Due to the number of streets scheduled, we cannot tell you the exact time your street will be done. We realize the inconvenience caused by limiting access to your street. Please consider that the inconvenience caused at this time is very small compared to what would later be required if this protection were not applied.

Driving or walking on this new material before it has cured will damage the seal and will stick to your shoes, be splattered up onto your car, and will track onto concrete driveways, carpets and floors. The material is highly adhesive but can be removed from vehicles with tar removers available from local auto parts stores. Read and follow the directions from any products purchased. SNC will not be responsible for damage caused by failing to obey the street closures.

This asphalt seal will be damaged by sharp turning during the curing phase, specifically power steering turns. This can be avoided by making wide turns and always be sure the vehicle is moving before turning the steering wheel.

FOR ADDITIONAL INFORMATION PLEASE CONTACT:

SNC

SIERRA NEVADA CONSTRUCTION, INC.




(775) 355-0420

NOTICE: Regarding Slurry Seal Thursday May 7, 2020

May 4, 2020 at 8:32 PM

From "Quita Deleon"

To Jeffrey Houston

 [FF- Road C...0 Approved.pdf 189.88 KB](#),  [SLURRY NOTIFICATION.pdf 613.59 KB](#),
 [Slurry Seal Map.pdf 1.74 MB](#)

Good Evening-

Attached is the Notice to Homeowners/Residents regarding no vehicles, bikes, or walking on Silver Wolf Rd/Springer Ct., on Thursday May 7 between 7am-6pm. Also attached are the notices SNC posted around the neighborhood and the map of the community.

Q. deLeon